



UP - PCS

Provincial Civil Services

Prelims & Mains

Uttar Pradesh Public Service Commission, Prayagraj

General Studies

Paper 3 – Volume 3

Science & Tech



G.S. PAPER – 3 VOLUME – 3

SCIENCE & TECH

S.No.	Chapter Name	Page No.
1.	Biology <ul style="list-style-type: none"> • Organisms • Cell • Tissues • Life • Life processes • Breathing and Respiration • Transportation • Excretion • Reproduction • Control and Coordination • Genetics • Human anatomy • Diseases 	1
2.	Chemistry <ul style="list-style-type: none"> • Matter • Atoms & molecules • Chemical Reactions • Acids and Bases 	71
3.	Physics <ul style="list-style-type: none"> • Motion • Work and Energy • Force • Electricity • Magnetism • Optics • Sound 	84
4.	Space Technology <ul style="list-style-type: none"> • Fundamentals • Geo Imaging Satellite or GISAT • Space Pollution • Launch Vehicles • Propellants used in Space Vehicles • Space Organizations • Major international Space Missions 	99
5.	Biotechnology <ul style="list-style-type: none"> • Relevance • Genetic Engineering • DNA or deoxyribonucleic acid • DNA sequencing • DNA Bar coding 	120

	<ul style="list-style-type: none"> • DNA Fingerprinting or DNA typing, DNA profiling, genetic fingerprinting, genotyping, or identity testing • Gene Editing • Environmental Biotechnology • Forest Biotechnology • Bioprocess/fermentation technology • Biotechnology in India • mRNA Technology 	
6.	Nanotechnology <ul style="list-style-type: none"> • History of Nanotechnology • Generations of Nanotechnology • Types • Nanomaterial • Applications of Nanotechnology • Adverse Impacts of Nanotechnology • Nanotechnology in India • Government efforts towards this field 	139
7.	Computer & Information Technology <ul style="list-style-type: none"> • Information technology (IT) • Computing • Internet • Digital Communications • Mobile Technology • Laser Technology • Cloud Architecture • Internet of Things • Optical Fibre • Wireless Technology • Crypto Technology-Blockchain Technology • Artificial Intelligence • Robotics • Quantum Computing • 3-D Printing or Additive Manufacturing 	151
8.	Nuclear Technology <ul style="list-style-type: none"> • Nuclear energy • Radiation • Radioactivity • Nuclear waste management • India's Three Stage Nuclear Power Programme • Nuclear Reactors in India • Organizations responsible for promotion of Nuclear Energy • Nuclear and Radiological Disasters 	181
9.	Defence <ul style="list-style-type: none"> • Regulatory Authorities • Missile Defence System in India • Air Defence Systems • Unmanned Aerial Vehicles (Drones) • Submarines • Aircraft carriers of the Indian Navy • Light Combat Aircraft 	197

10	Schemes and policies <ul style="list-style-type: none">• Department of Biotechnology• Department of Electronics and Information Technology (DeitY)• Department of Science and Technology• National Science, Technology, and Innovation Policy	212
-----------	---	------------

1

CHAPTER

Biology



Organisms

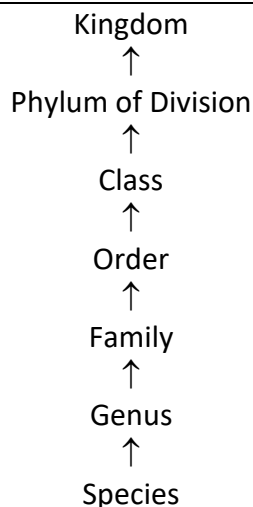
- A living thing with an **organized structure** that can:
 - React to **stimuli**
 - **Reproduce**
 - **Grow**
 - **Adapt**
 - **Maintain homeostasis.**
- **Classified by taxonomy into groups:**
 - Multicellular animals, plants, and fungi or unicellular microorganisms
 - Eg. protists, bacteria, and archaea.
- All **organisms made of cells.**



Classification of Organisms

Based on the number of cells	Based on the subcellular structure
<ul style="list-style-type: none"> ● Single-celled: Bacteria, archaea, and protists ● Multicellular: Animals and Plants 	<ul style="list-style-type: none"> ● Eukaryotes: Having a well-defined nucleus with genetic material. ● Prokaryotes: Without nucleus but possess genetic material in a nucleoid.

Hierarchy of Classification- Groups



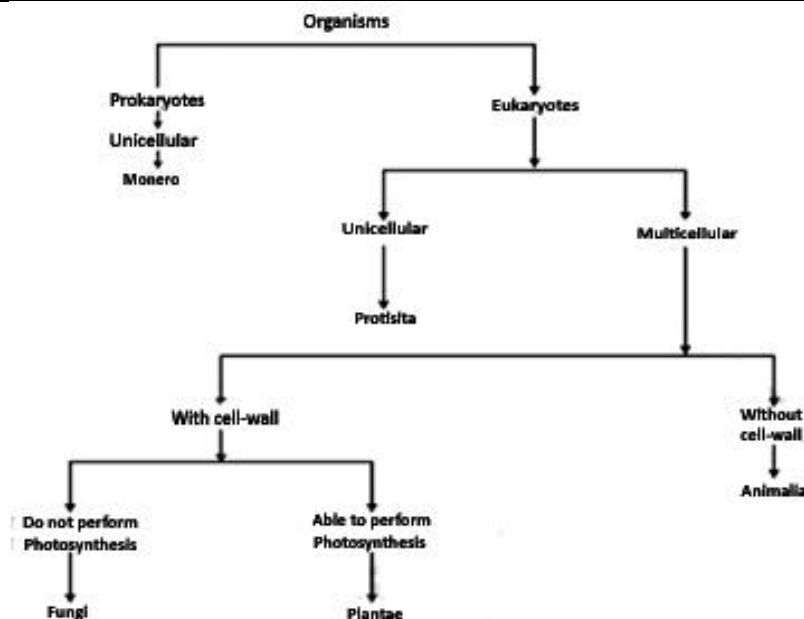
- **Hierarchy - sequence of categories** in a **decreasing** or **increasing order** from kingdom to species and vice versa.
 - **Kingdom (highest rank)** followed by division, class, order, family, genus and species (**lowest rank**).
1. **Species:**

- **Group of population similar in form, shape and reproductive features so that fertile sibling can be produced.**
2. **Genus:**
 - A **group of similar species.**
 - **Genera having only one species - monotypic.**
 - **Genera having more than one species - polytypic.**
 - **Eg. Lion & tiger are quite similar species placed under genus Panthera.**
 3. **Family:**
 - **Collection of similar genera.**
 - **Separated from genera by reproductive and vegetative features.**
 - **Eg. cats and leopard - family Felidae.**
 4. **Order:**
 - **One or more than one similar families constitute order.**
 - **Eg. Family Felidae are included in the order Carnivora.**
 5. **Class:**
 - **One or more than one order makes a class.**
 - **Eg. Class Mammalia includes all mammals - bats, rodents, kangaroos, whales, great apes and man.**
 6. **Phylum:**
 - **Collection of similar classes.**
 - **Eg. Phylum chordata of animals has class Mammalia along with birds, reptiles and amphibians.**
 7. **Kingdom:**
 - **Top most taxonomic category.**
 - **Eg. all animals are included in Kingdom Animalia.**

Taxon

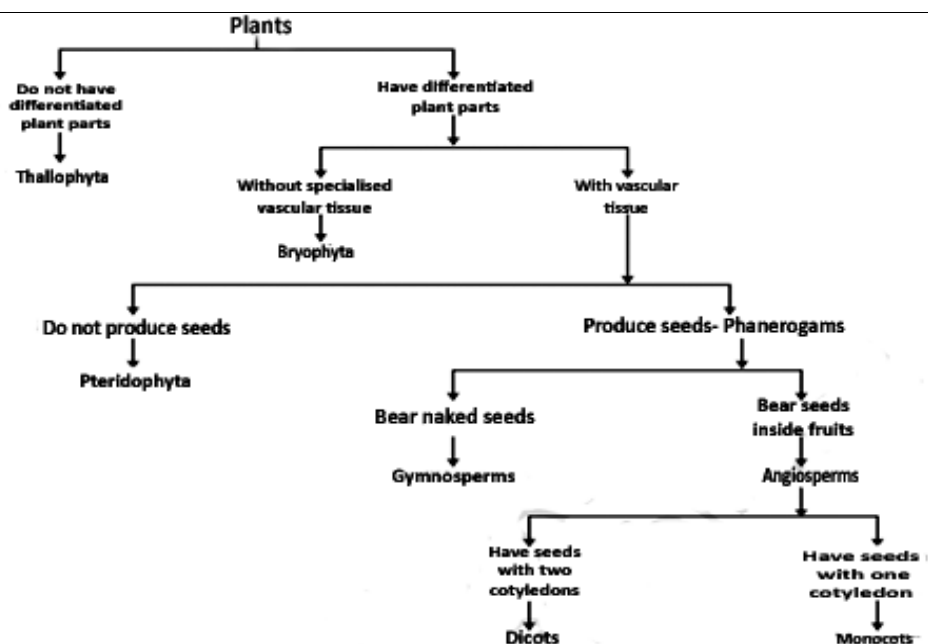
Unit that denotes **grouping** of organisms **based on observable features.**

5 Kingdom classification



Comparison of Five Kingdom					
Criteria	Monera	Protista	Fungi	Plantae	Animalia
Cell Type	Prokaryotic	Eukaryotic	Eukaryotic	Eukaryotic	Eukaryotic
Level of organisation	Unicellular	Unicellular	Multicellular and unicellular	Tissue/organ	Tissue organ/organ system
Cell wall	Present (made up of peptidoglycan and mucopeptides)	Present in some (made up of cellulose, absent in other)	Present (made up of chitin or cellulose)	Present (made up of cellulose)	Absent
Nutrition	Autotrophic (Phototrophic, Chemoautotrophic) Heterotrophic parasitic and saprophytic)	Autotrophic photosynthetic Heterotrophic	Heterotrophic, Parasitic or saprophytic	Autotrophic (photosynthetic)	Heterotrophic (holozoic)
Motility	Motile or non-motile	Motile or non-motile	Non-motile	Mostly Non-motile	Mostly motile
Organisms	Archaeobacteria, Eubacteria, Cyanobacteria, Actinomycetes and mycoplasma	Chrysophytes, Dinoflagellates, Euglenoids, Slime molds, Amoeba, Plasmodium, Trypanosoma, Paramecium	Yeast, Mushrooms, and molds	Algae, Bryophytes, Pteridophytes, Gymnosperm and Angiosperm	Sponges, Invertebrates and vertebrates

Plantae Kingdom



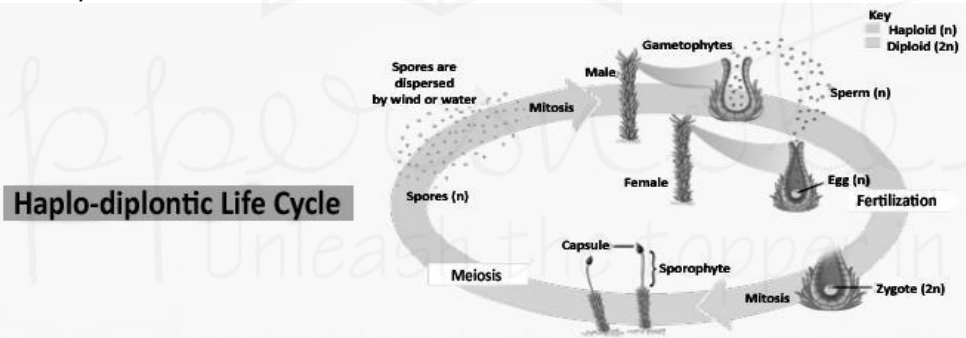
1. Thallophyta

- Unique features:
 - Plants that **do not have well-differentiated body design**.
 - **Commonly called algae**.
 - Predominantly **aquatic**.
 - **Eg.** Spirogyra, Ulothrix, Cladophora, Ulva and Chara.
- Reproduction : **No specialised reproduction process**

2. Bryophyta

Bryophyta	
<ul style="list-style-type: none"> ● Amphibians of plant kingdom ● Grow in terrestrial environment but depend on water for reproduction ● Grow in moist & shady areas ● Responsible for plant succession on bare rocks ● Habitat: Arid forests, rainforests, apart from the alpine habitats ● Grow on rocks, soil, tree trunks, bones, rotting wood etc. 	

Unique Bryophyta
<ul style="list-style-type: none"> ● Length: Few millimetre to 1 m ● Partially differentiated body, lacking true roots, leaves & stem ● Root-like structure called rhizoid present, body is more thallus-like & haploid ● Spore producing, non-vascular plants ● Exhibit haplo-diplontic life cycle



- Reproduction: Sex organs are multicellular. Antheridium is the male sex organ while archegonium is the female sex organ → Antheridium produces antherozoids with 2 flagella & archegonium produces single
 - (i) Antherozoid released in water come in contact with archegonium
 - (ii) Male & female gametes fuse to form zygote which remains in archegonium for some time.
 - (iii) Mitosis of zygote forms embryonic sporophyte that is covered & protected by calyptra
 - (iv) Meiosis occurs in sporophyte to produce haploid spores which germinate to produce gametophyte

Classification	Importance
<div style="text-align: center;"> </div>	<ul style="list-style-type: none"> ● Have the ability to initiate soil formation in barren lands as they survive on bare rocks. ● Maintain soil moisture & replenish nutrients in forest vegetation ● Peat mosses act as biofuel & are economically useful <div style="text-align: center; margin: 10px 0;"> </div> <ul style="list-style-type: none"> ● Used as packing material for shipment of living material as they can retain water.

3. Pteridophyta

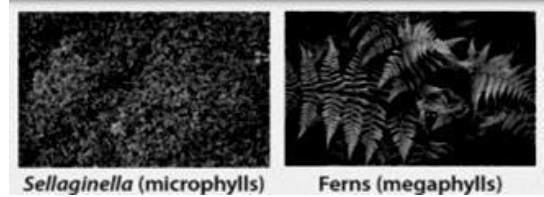
Pteridophyta

- Family of ferns & horsetails
- Called cryptogams as they don't bear flowers & seeds.
- First group of terrestrial vascular plants.
- Found in damp and shady places.
- Ferns are grown as ornamental plants.

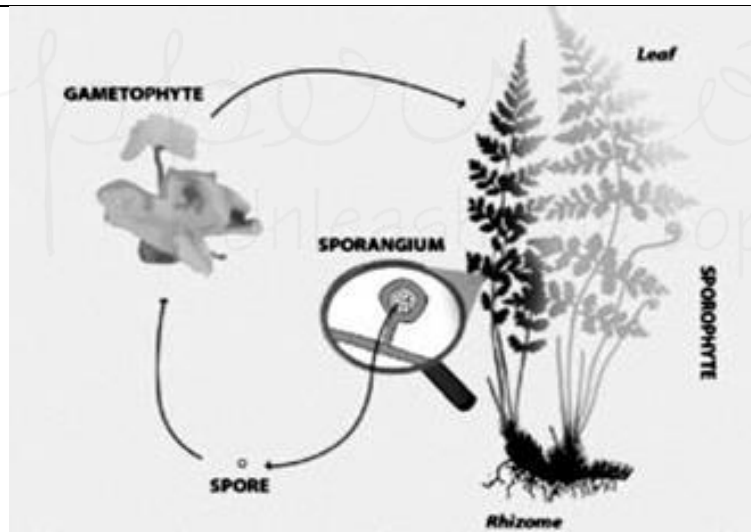


Unique Features

- **Length** : Mostly short but few grow tall upto few metres.
- Plant body is differentiated into true roots, leaves & stems.
- Leaves can be small (microphylls) or large (megaphylls)
- Sporangia bear leaf-like appendages – **sporophyll**
- Sporophylls form compact structure called cones or strobili in some plants.
- Reproduction : Show true alternation of generation.



Cone of Equisetum

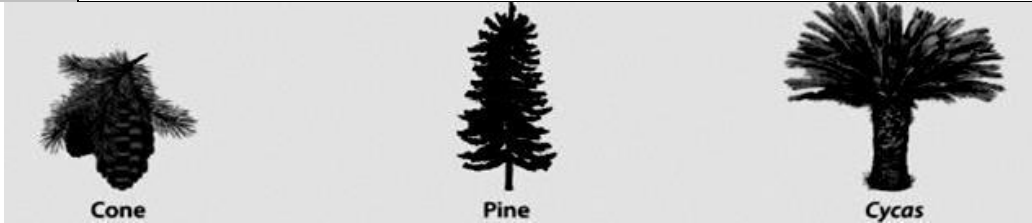


- Dominant sporophyte produce spores by meiosis & gametophyte produces gametes by mitosis.
- Sporangia produce spores in the spore mother cells that germinate to give gametophytes.
- Gametophytes are free-living, multicellular, photosynthetic – Prothallus
- Male sex organ anteridia produce antherozoids & female sex organ is archegonia.
- **Reproduction procedure.**
 - Antherozoids are released in water and come in contact with archegonia.
 - Gametes fuse in the archegonium to produce zygote
 - Zygote produces sporophyte after division.
- Spores : Homosporous or heterosporous
- In heterosporous plants, microspore & megaspore give rise to male & female gametophyte respectively.

4. Gymnosperms

Gymnosperm :

- Consist of pines & deodar
- Gymno-naked: sperma – seed
- Plants with naked seeds that do not bear flower & fruits
- Seeds are visible as cones & develop on surface of reproductive structure.



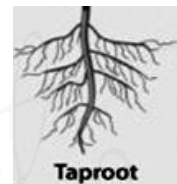
Unique Features

- Wind is the major source of pollination.
- Length : Medium to large tree & few are shrubs
- Vascular & Complete differentiation into leaves, stem & roots
- Leaves: Needle-like with thick cuticle & sunken stomata.



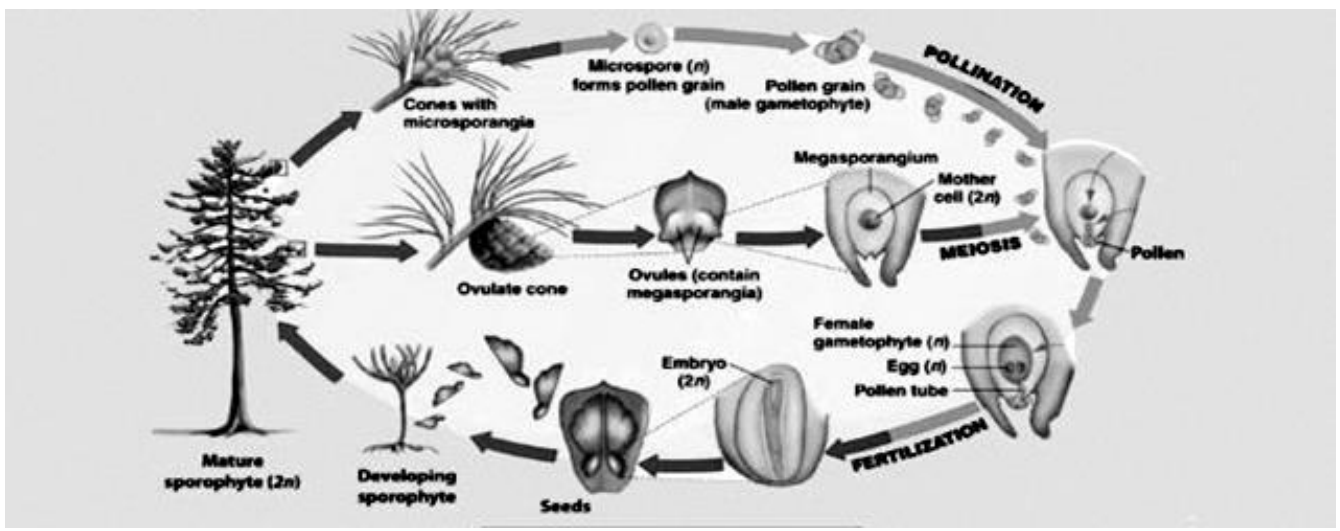
Roots

- Taproot system
- Some form mycorrhiza (e.g. pinus)
- Some form specialized roots called coralloids roots (e.g. *Cycas*)



Reproduction:

- Male & female cones can be same (e.g. Pinus) or different (e.g. : cycas) plants.
- Heterosporous plants that produce haploid microspores & megaspores.
- Male cones: Contain microsporophyll, few of which develop into pollen grains & rest degenerate.
- Female Cones: Several megasporophyll cluster to form female cone.
- Female cone bears ovule with megasporangium & give rise to haploid megaspores & a megaspore mother cell.



5. Angiosperms

Angiosperms

- The family of flowering plants.
- Vascular fauna dominating across the globe.
- Called phanerogams due to the presence of flowers
- Seeds (ovules) are enclosed inside hollow ovary (which forms the fruit)



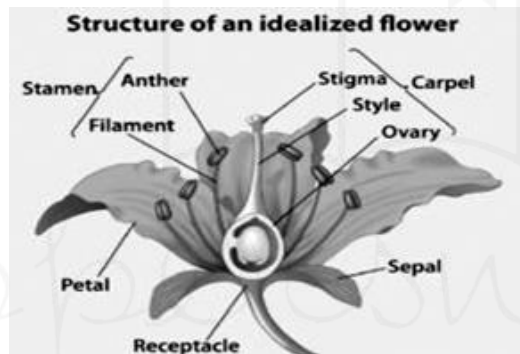
Unique Features

- Well differentiated plant body with fully developed root & shoot system.
- Survive in various habitats.
- Length : Microscopic Wolfia to > 100 m tall Eucalyptus
- Vast diversity including woody trees, shrubs & herbs.
- Leaves, stem & roots are adapted as per habitat

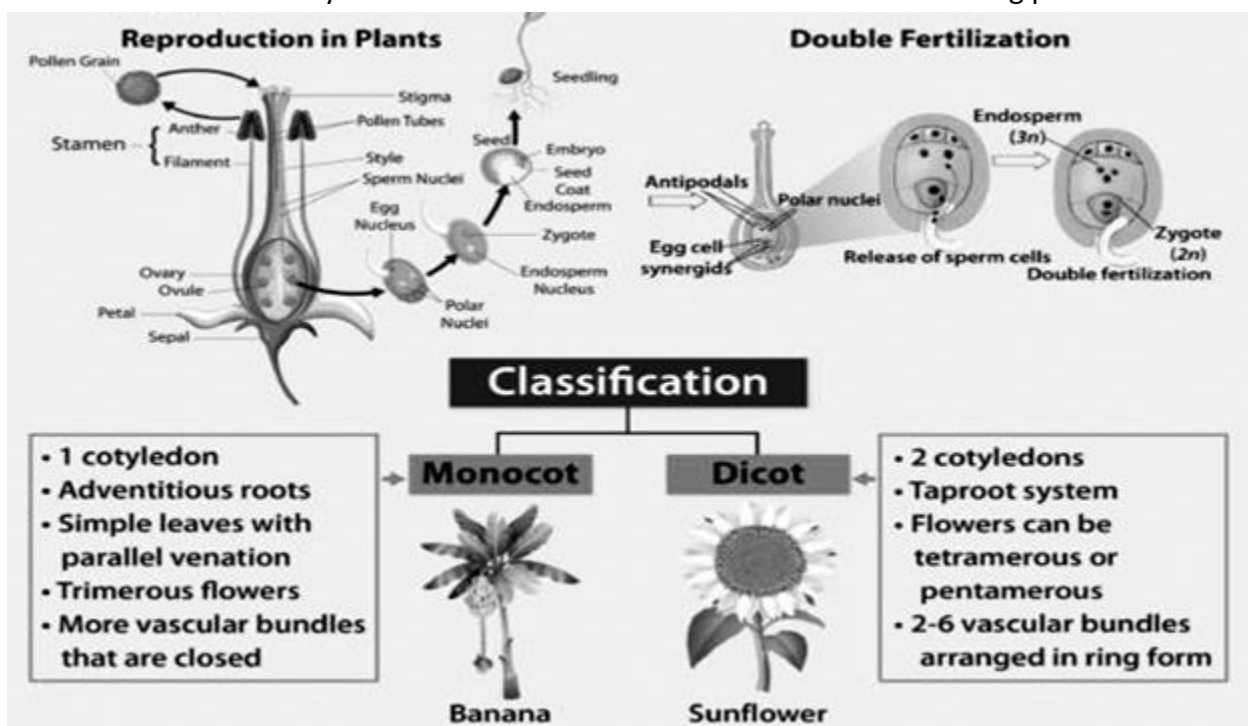


Reproduction:

- Flower is the reproductive structure can be unisexual or bisexual



- Alternation of generation – haploid gametophyte alternates with the diploid sporophyte.
- Double fertilization is characteristic to Angiosperms – Syngamy & triple fusion.
- Post-fertilization ovary forms the fruit & ovules form the seeds & remaining parts with off.

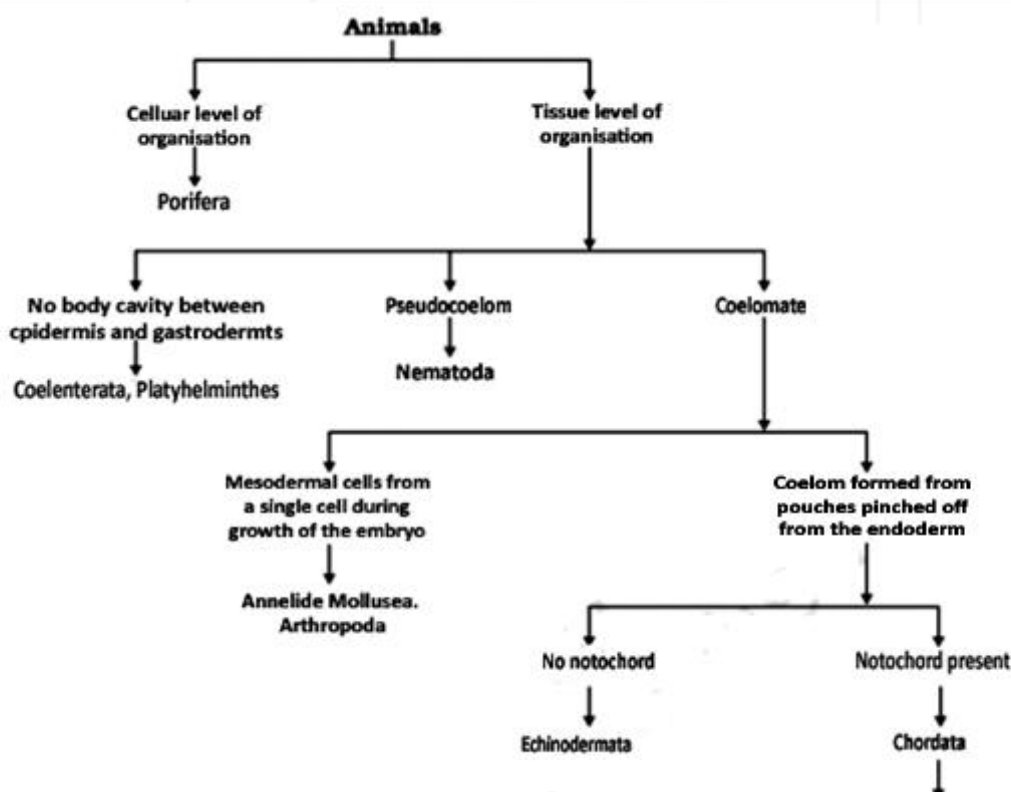


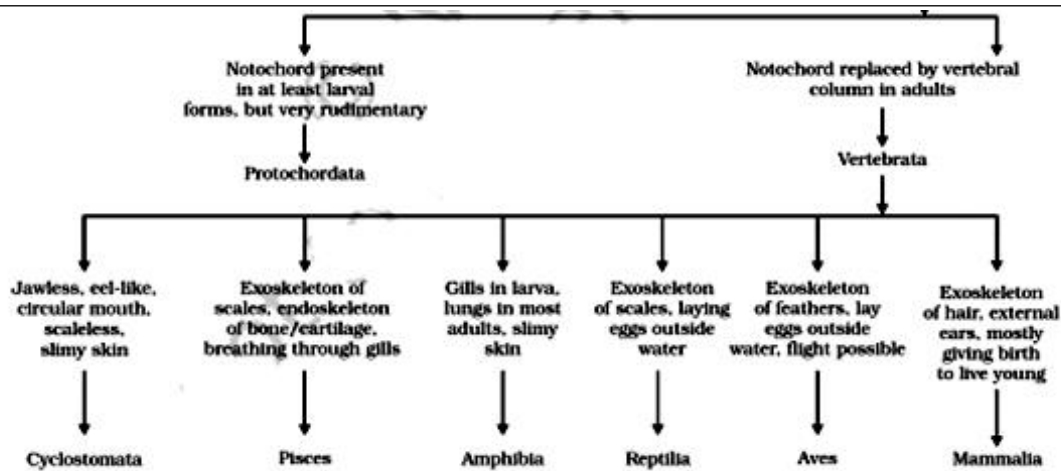
Vascular and Nonvascular Plants

	Vascular Plants	Non - Vascular Plants
Definition	<ul style="list-style-type: none"> ● Possess vascular system to conduct food and water throughout the plant 	<ul style="list-style-type: none"> ● Lack vascular systems
Diversity	<ul style="list-style-type: none"> ● Higher 	<ul style="list-style-type: none"> ● Low
Vascular System	<ul style="list-style-type: none"> ● Present 	<ul style="list-style-type: none"> ● Absent
True stem, Roots & Leaves	<ul style="list-style-type: none"> ● Yes 	<ul style="list-style-type: none"> ● No; a stem and leaf-like structures and rhizoids, instead of true structures.
Plant Strength	<ul style="list-style-type: none"> ● Xylem tissues contain lignified tissues - provide support and rigidity to the plant. 	<ul style="list-style-type: none"> ● No water conducting tissues ● Tender and shorter than vascular plants
Reproduction	<ul style="list-style-type: none"> ● Sporophytes 	<ul style="list-style-type: none"> ● Gametophytes
Examples	<ul style="list-style-type: none"> ● Ferns, conifers, and flowering plants. 	<ul style="list-style-type: none"> ● Bryophytes, including liverworts, mosses, and hornworts.
Drought Resistance	<ul style="list-style-type: none"> ● Almost all are drought resistant 	<ul style="list-style-type: none"> ● Susceptible to drought. ● Associated with swamps

Sporophytes	Gametophytes
Use the process of meiosis	Use the process of mitosis
Results- formation of spores	Results - production of gametes
Diploid plants	Haploid plants
Have two sets of chromosomes	Have a single set of chromosomes
Reproduce asexually	Reproduce sexually

Animalia:





1. Porifera

- **Non mobile animals attached to some solid support.**
- **Holes or pores** all over the body.
- **A canal system circulating water** throughout body to **bring in food and O₂.**
- **Mainly found in marine habitats.**
- **Commonly k/a sponges**

2. Coelenterata

- **Animals living in water.**
- **Diploblastic:** body is made up of two layers of cells.
- Some **live in colonies** while others have a **solitary life**
- **Eg. span (Hydra) jellyfish .**

3. Platyhelminthes

- **Triploblastic:** 3 layers of cells from which different tissues can be made.
- **Some degree of tissues formation.**
- Either **free living or parasitic.**
- **Eg. Planarians, liver flukes.**

4. Nematode

- **Bilaterally symmetrical** and **triploblastic.**
- **Body is cylindrical** rather than **flattened.**
- **Tissues, but no real organs,**
- A sort of **body cavity** or a **pseudocoelom,** is **present.**
- K/a **parasitic** worms causing diseases, such as worms causing **elephantiasis** (filarial worms) or worms in the intestines (**roundworm** or **pinworms**).

5. Annelida

- Have **true body cavity.**
- Allows true organs to be packaged in body structure.
- **Extensive organ differentiation.**
- **Eg- Earthworms, leeches.**

6. Arthropods

- **Open circulatory system** and so the **blood does not flow in well defined blood vessels.**
- Have **joint legs.**
- **Eg- prawns, butterflies, houseflies, spiders, scorpions and crabs.**

7. Mollusca

- Have an **open circulatory system** and **kidney like organs** for **excretion**.
- **Little segmentation**.
- A **foot** is used for **moving around**.
- **Eg-** snails, and mussels, octopus.

8. Echinodermate

- **Spiny skinned** organisms.
- **Exclusively free living marine animals**.
- Have a **water driven tube system** that they use for moving around.
- Have **hard calcium carbonate structure** that they use as skeleton.
- **Eg-** starfish, sea cucumber.

9. Protochordats

- **Marine animals**.
- **Eg.** balanoglossus, hardemania and amphioxus.

10. Vertebrata

- Have a **true vertebral column & internal skeleton**.
- **Bilaterally symmetrical**
- **Triploblastic**
- **Coelomic and segmented**
- **Complex differentiation** of body tissues and organs.
- All **chordates possess** the following features:
 - have a **notochord**
 - have a **dorsal nerve cord**
 - **Triploblastic**
 - Paired **gill pouches**
 - **Coelomate**.
- Grouped into **six classes**:
 - A. Cyclostomes**
 - **Jawless vertebrates**.
 - Have an **elongated eel-like body, circular mouth, slimy skin**
 - **Scaleless**.
 - **Ectoparasites** or borers of other vertebrates.
 - **Eg.** Petromyzon (Lamprey) and Myxine (Hagfish)
 - B. Pisces**
 - **Exclusively aquatic** animals.
 - **Skin** is covered with **scales/ plates**.
 - **Obtain oxygen** dissolved in water by **using gills**.
 - **Body is streamlined**, and a **muscular tail** for **movement**. T
 - **Cold-blooded**
 - **Hearts** have only **two chambers**.
 - **Lay eggs**.
 - **Eg.** sharks, tuna or rohu

C. Amphibia

- **No scales**
- Have **mucus glands** in the **skin**,
- **3 chambered heart.**
- **Respiration** through **either gills or lungs.**
- **Lay eggs.**
- Found both in **water** and **on land.**
- **Eg.** Frogs, toads and salamanders

D. Reptilia

- **Cold-blooded**
- Have **scales** and **breathe through lungs.**
- Most have a **three-chambered heart**
- **Exception:** crocodiles- 4 heart chambers.
- **Lay eggs** with **tough coverings.**
- **Do not need to lay their eggs in water,** unlike amphibians.
- **Eg.** Snakes, turtles, lizards and crocodiles

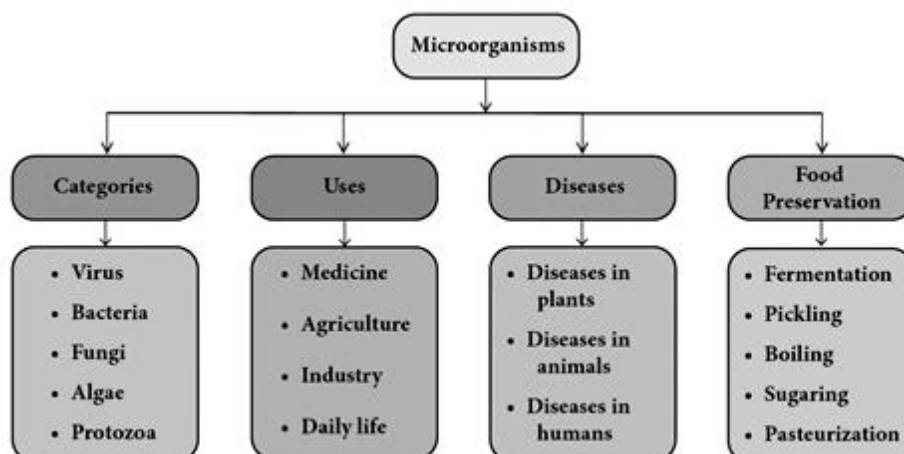
E. Aves

- **Warm-blooded** animals
- **4-chambered heart.**
- **Lay eggs.**
- An **outside covering of feathers; 2 forelimbs** modified for **flight.**
- **Breathe through lungs.**
- **Eg.** All birds

F. Mammalia

- **Warm-blooded** animals with **four-chambered hearts.**
- Have **mammary glands** for production of milk.
- **Skin** has **hairs& sweat** and **oil glands.**
- **Produce live young ones.**
- Few like **platypus** and **echidna** lay egg
- **Kangaroos** give **birth to very poorly developed** young ones.
- **Eg.** human, monkeys, whale etc

Microorganisms



- **Very small** in size & **cannot be seen with naked eye.**
- Can be seen **only with the help of a microscope.**
- aka **microbes.**
- **Microbiology-** Branch of science dealing with **study of microorganisms.**
- Found in : **air, water (ponds, lakes, rivers and oceans), soil** and even inside our bodies.
- **5 categories.**

Virus	<ul style="list-style-type: none"> ● A tiny particle made up of genetic material and protein. ● Intermediate between living and non living things. ● Intracellular obligatory parasites. ● Virology- study of viruses. ● 10,000 times smaller than bacteria. ● Can be rod shaped, spherical or of other shapes. ● Contains a core DNA or RNA. ● Core surrounded with a protein coat ● Protein coat is sometimes covered by an envelope of proteins, lipids, and carbohydrates. ● Causes diseases to plants, animals and human beings.
Bacteria	<ul style="list-style-type: none"> ● Single-celled prokaryotes(cells without nuclei). ● Considered 1st living organisms on earth. ● Grouped under the kingdom Monera. ● Bacteriology- study of bacteria. ● Size - 1µm to 5µm(micrometer). ● 2 types based on respiration : <ul style="list-style-type: none"> ○ Aerobic bacteria (requires oxygen), ○ Anaerobic bacteria (does not require oxygen). ● An outer covering k/a cell wall. ● Other cell organelles (mitochondria, golgi body, endoplasmic reticulum etc.,) are absent. ● Eg : E.coli, Bacillus anthracis, Vibrio cholera etc.
Fungi	<ul style="list-style-type: none"> ● Eukaryotic organisms that lack chlorophyll. ● Grow in dark environments. ● Either unicellular (like Yeast) or multicellular (like Penicillium). ● Found in all kinds of habitats. ● Included under kingdom Fungi. ● Mycology- study of fungi. ● Some are macroscopic (Eg. Mushroom). ● Around 70,000 species of fungi in the world.
Algae	<ul style="list-style-type: none"> ● Very simple plants like eukaryotic organisms. ● Found in moist habitats. ● Rich in chlorophyll ● Seen as thin film on surface of lakes and ponds. <ul style="list-style-type: none"> ○ aka 'grass of water'.

	<ul style="list-style-type: none"> ● Autotrophic and produce their own food (with help of chloroplast). ● Algology/ phycology- study of algae. ● Size - 1 micron to 50 meter. ● Eg : Chlamydomonas, Volvox, Ulothrix, Fristschiella etc.
Protozoa	<ul style="list-style-type: none"> ● Single celled eukaryote. ● Included under the kingdom Protista. ● Protozoology- Study of protozoa. ● Found in ponds, ocean, in moist soil, and in the cells and tissues of plants and animals - causing diseases. ● Range - 2 to 200 microns. ● Eg : Paramecium, Euglena, Amoeba, Plasmodium etc.

Animals

- Any eukaryotic multicellular organism of kingdom Animalia.
- Heterotrophic, motile & with specialized sensory organs,
 - Lacking a cell wall & growing from a blastula during embryonic development.



Characteristics

Multicellular	<ul style="list-style-type: none"> ● Body composed of several cells performing specific functions. <ul style="list-style-type: none"> ○ Cells organized into various animal tissues, ○ Eg: Epithelial tissues, connective tissues, etc.
Eukaryotic	<ul style="list-style-type: none"> ● Contain a membrane-bound nucleus. ● Nucleus -organelle containing chromosomes that bear genes. <ul style="list-style-type: none"> ■ Other organelles suspended in the cytoplasm of an animal cell, ■ Eg. Golgi apparatus, endoplasmic reticulum, lysosomes, and peroxisomes,
Heterotrophic	<ul style="list-style-type: none"> ● Depend on other organisms for food.
Motile	<ul style="list-style-type: none"> ● Capacity to move at will. ● by muscles and locomotory structures(e.g. arms, legs, wings, fins, tails, etc.)
Specialized sensory organs:	<ul style="list-style-type: none"> ● Eg: eyes, ears, nose, skin, and tongue. ● Vital in recognizing and responding to stimuli in environment. ● Contains common and specialized receptors.
Reproduce sexually	<ul style="list-style-type: none"> ● Produce a haploid sperm cell (a male sex cell) & a haploid ovum (a female sex cell) <ul style="list-style-type: none"> ○ Unite at fertilization to form a diploid zygote. ● Capable of asexual reproduction. ● Eg: some cnidarians produce a genetic clone by budding.
Aerobic Respiration	<ul style="list-style-type: none"> ● Inhale oxygen and release carbon dioxide . ● Oxygen important to cell respiration for synthesis of energy.